

2

PITCH NOTATION

Scope: *The musical staff, the G Clef, the F Clef, the C Clef, and voice parts are covered.*

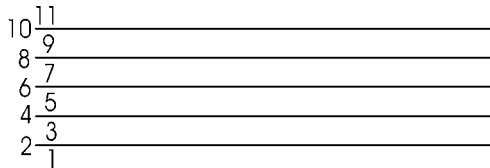
Music, a written language

In order that thoughts expressed in a language be preserved, that language must have a written form. Notation is the written form of music.

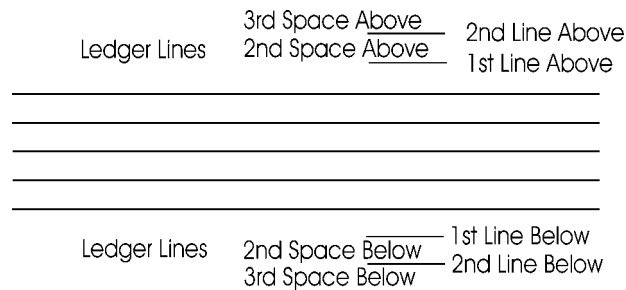
Pitches are represented graphically upon sets of five *lines* and their associated *spaces* called a *staff*.



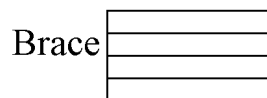
Each line and each space is called a *degree*. Eleven degrees are made available for use by a staff.




The staff can be extended to make available additional degrees through the use of *ledger lines*.




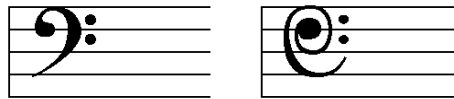
A *brace* is used to designate a set of five lines as a staff.

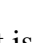
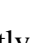
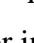


The female voice is higher in pitch than the male voice. To distinguish between the pitches represented by a staff showing pitches to be sung by the female voice from the pitches to be sung by the male voice, a *G Clef (Treble Clef)*  is added at the beginning of each staff showing the female pitches.



An *F Clef (Bass Clef)*  is placed at the beginning of each staff representing the pitches to be sung by the male voice. The F Clef on the right was used in the past.



Sometimes high male pitches or low female pitches are represented on a staff defined with a *C Clef*, , , or . The C Clef on the left is mostly used for instruments, the one in the middle is used more now than the one on the right.

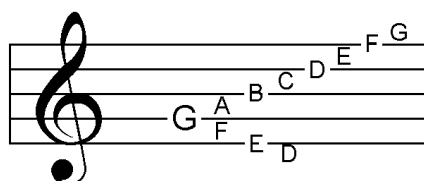


Each degree on a staff which has been qualified (defined by adding a clef sign) as to its pitch range by a clef, has a name. The names for the pitches represented on a staff are A, B, C, D, E, F, and G. B is higher in pitch than A, C is higher in pitch than B, etc.

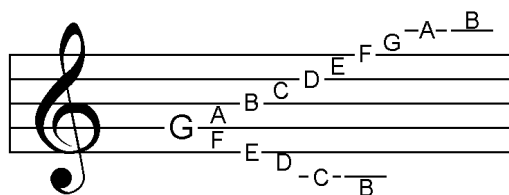
The G Clef is placed around the second line from the bottom of the staff. This line becomes G.



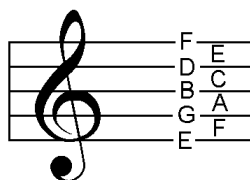
The rest of the degrees can now be named starting with G and proceeding backwards, naming the degrees below G. For the degrees above G, the sequence starts over again with A and proceeds in ascending order as shown in the following example.



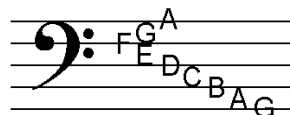
When ledger lines are added, the sequence of names continues onto the additional degrees.



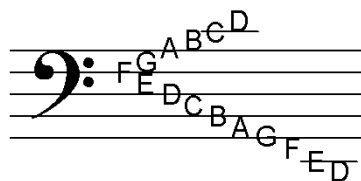
Notice that the degrees on spaces within the G Staff form "FACE". The lines on the G Staff are E, G, B, D, and F (Every Good Boy Does Fine).



On the F Clef qualified staff, the F Clef is placed around the second line from the top of the staff. This line becomes F. The rest of the degrees are then named in order.



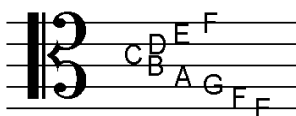
Ledger lines can again be added to extend the staff to other pitches.



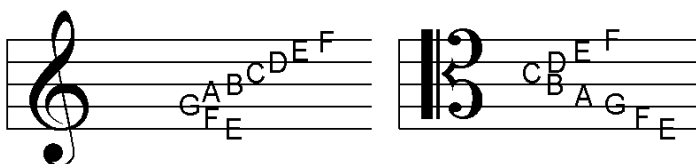
The names for the degrees on spaces on the F Clef are A, C, E, and G (All Cows Eat Grass). The names for the degrees on lines are G, B, D, F, and A (Good Boys Do Fine Always).



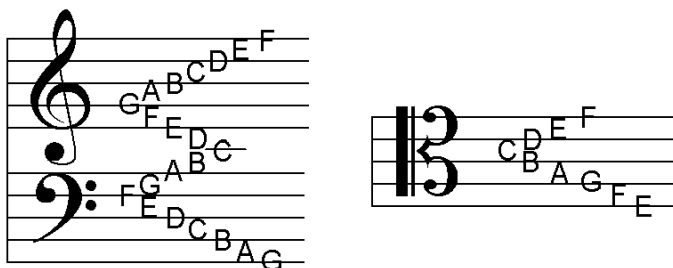
The C Clef is the only clef that can be placed on more than one position on the staff. Whichever degree the C Clef is placed around becomes C. All illustrations in this book show the C Clef placed around the second space from the top of the staff. This is the pitch called middle C.



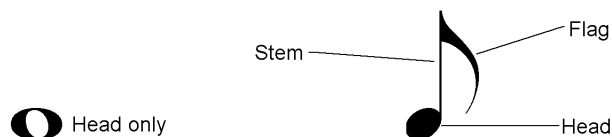
The names for the degrees on the C Clef qualified staff are the same as those for the G Clef qualified staff. The actual pitches represented are different however. The pitches of the G Clef staff are higher than those of the C Clef staff.



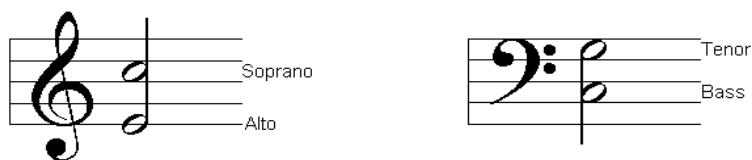
The figure below shows the relationship of the three qualified staves. Notice that the first ledger line above the F Clef staff is C and the first ledger line below the G Clef staff is C. These represent the same pitch. The C degree on the C Clef staff around which the clef is placed represents this same pitch. This C is called *Middle C*.



A *note* is a musical "word" in music notation. The body or head is placed on the degree for the pitch to be sounded.



Most church music is written for four voice pitch ranges. There is a high female range and a low female range. They are placed on the G Clef qualified staff. There is also a high male range and a low male range. They are placed on the F Clef qualified staff.



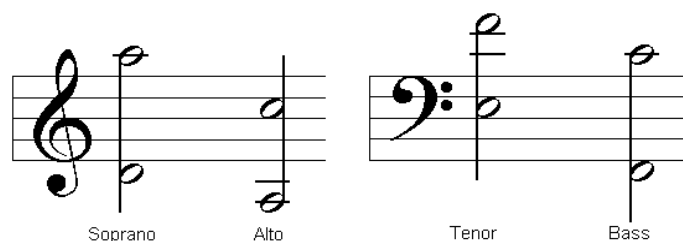
Voice parts

Soprano is the higher female voice part and usually contains the melody of the song. The soprano will be the top sequence of notes on the G Clef qualified staff. The soprano voice range normally covers the pitches from D on the G Clef staff to A above the G Clef staff.

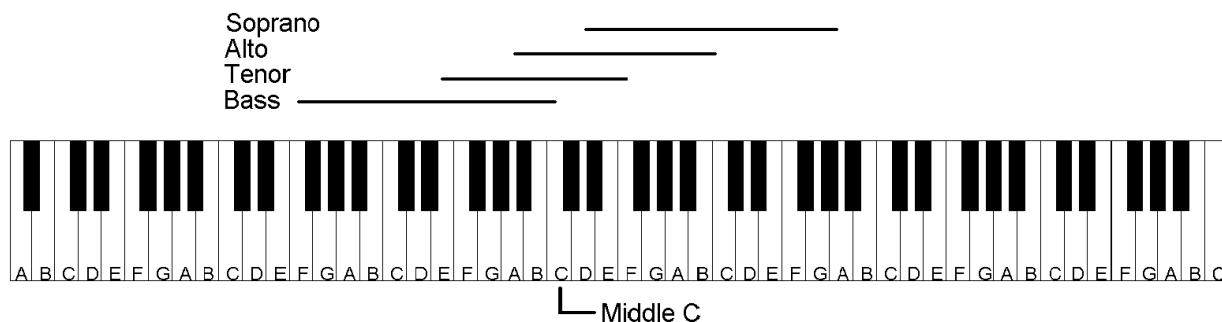
Alto is the lower female voice part and will be the bottom sequence of notes on the G Clef qualified staff. The alto voice range normally covers the pitches from A below the G Clef staff to C on the G Clef staff.

Tenor is the higher male voice part and will be the top sequence of notes on the F Clef qualified staff. The tenor voice range normally covers the pitches from E on the F Clef staff to F above the F Clef staff.

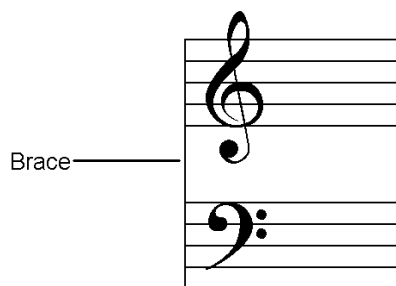
Bass is the lower male voice part and will be the bottom sequence of notes on the F Clef qualified staff. The bass voice range normally covers the pitches from F below the F Clef staff to C above the F Clef staff.



The pitch ranges described are not given as rules, but as practical limits for most singers. When the pitch ranges for the four voice parts are displayed against a piano keyboard, they fall on the keyboard as shown in the next illustration.

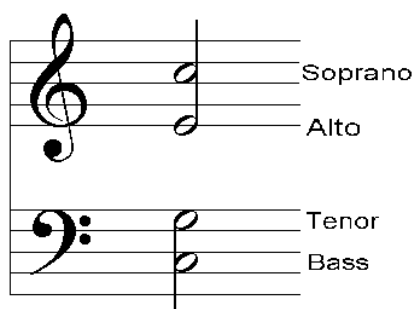


When the G Clef staff and F Clef staff are connected by a brace, they form the *Grand Staff* (*Great Staff*).

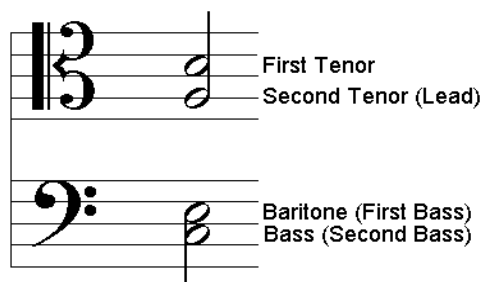


A *score* is a presentation of all staves necessary to record all parts for a particular song and can vary with requirements.

The most familiar score is the Grand Staff and shows the soprano, alto, tenor, and bass voice parts.



Another score uses the C Clef staff and the F Clef staff when only male voice parts are written, such as in male quartets. The melody is usually sung by the second tenor.



Shown below are two a scores used often for choral or special arrangements. Each voice part is displayed on a separate staff. Although wrong, many times a G Clef is used in the place of the C clef for the tenor voice part.

The image displays two musical staves for Soprano, Alto, Tenor, and Bass. The left staff shows the Tenor part with a C-clef (C-clef) on the third line, while the right staff shows the Tenor part with a G-clef (G-clef) on the first line.

When notes are placed on a qualified staff, the pitch to be sounded for that note is the same pitch represented by the degree on which the body of the note is placed. When more than one part is shown on a staff, care must be taken to sing the correct tones for a given part. In the example below, lines have been drawn from one note to another in each of the parts. The first pitch to be sounded by the soprano is A. The second pitch is B, etc. In the alto, the first pitch to be sounded is F and the second is E, etc.

The image shows a musical staff with a treble clef. It contains a sequence of notes connected by lines, illustrating the pitch progression for Soprano, Alto, Tenor, and Bass parts. The notes are: Soprano (A, B, C, D, E, F, G, A), Alto (F, E, D, C, B, A, G, F), Tenor (C, B, A, G, F, E, D, C), and Bass (G, F, E, D, C, B, A, G).

Summary: Female voice parts (soprano and alto) are found on the G Clef staff and the male voice parts (tenor and bass) are found on the F Clef staff.

