

Softly and Tenderly

Words: Will L. Thompson

SSA

Music: Will L. Thompson

Arr: James W. Tackett



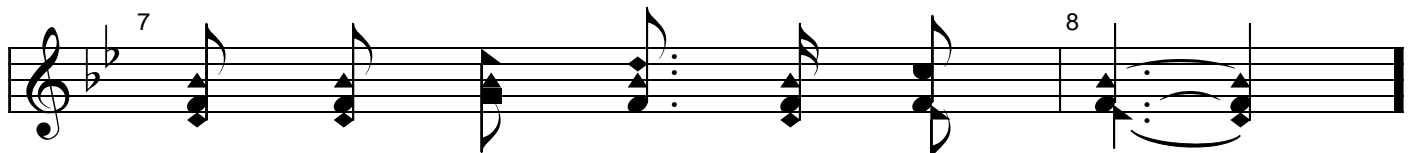
1. Soft - ly and ten - der - ly Je - sus is call - ing,
2. Why should we tar - ry when Je - sus is plead - ing,
3. Time is now fleet - ing, the mo - ments are pass - ing,
4. Oh! for the won - der - ful love He has prom - ised,



Call - ing for you and for me; for me.
Plead - ing for you and for me?
Pass - ing from you and from me;
Prom - ised for you and for me;

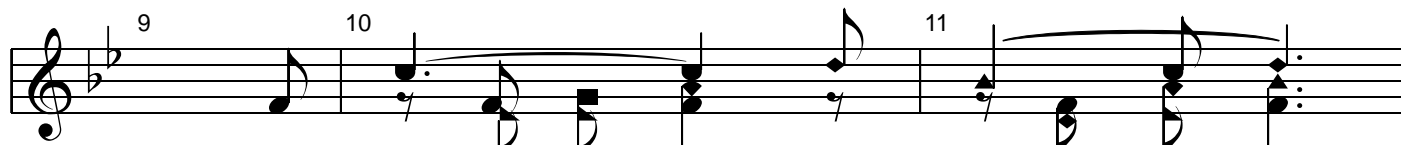


See, on the por - tals He's wait - ing and watch - ing,
Why should we lin - ger and heed not His mer - cies,
Shad - ows are gath - er - ing, death - beds are com - ing,
Though we have sinned, He has mer - cy and par - don,



Watch - ing for you and for me.
Mer - cies for you and for me.
Com - ing for you and for me.
Par - don for you and for me.


Softly and Tenderly



9 10 11

Come home, *O come home.* come home, *Please come home.*

Detailed description: This block contains the first line of musical notation, measures 9 through 11. The music is written on a single treble clef staff in a key signature of two flats (B-flat and E-flat). Measure 9 begins with a quarter note G4. Measure 10 features a dotted quarter note G4 followed by a half note chord of F4 and A4. Measure 11 starts with a quarter note G4, followed by a half note chord of F4 and A4, and ends with a quarter note G4. The lyrics are placed below the staff, with the first part of measure 10 and the second part of measure 11 italicized.



12 13

Ye who are wea - ry, come home; *Bless - ed home.*


Detailed description: This block contains the second line of musical notation, measures 12 and 13. Measure 12 consists of a series of chords: a dotted quarter note chord of G4 and B4, a quarter note chord of G4 and B4, a quarter note chord of G4 and B4, a quarter note chord of G4 and B4, a quarter note chord of G4 and B4, and a quarter note chord of G4 and B4. Measure 13 begins with a quarter note G4, followed by a half note chord of F4 and A4, and ends with a quarter note G4. The lyrics are placed below the staff, with the second part of measure 13 italicized.



14 15

Ear - nest-ly, ten - der - ly, Je - sus is call - ing,

Detailed description: This block contains the third line of musical notation, measures 14 and 15. Measure 14 consists of a series of chords: a dotted quarter note chord of G4 and B4, a quarter note chord of G4 and B4, a quarter note chord of G4 and B4, a quarter note chord of G4 and B4, a quarter note chord of G4 and B4, and a quarter note chord of G4 and B4. Measure 15 begins with a quarter note G4, followed by a half note chord of F4 and A4, and ends with a quarter note G4. The lyrics are placed below the staff.



16 17

Call - ing, O sin - ner, come home! *Please come home.*

Detailed description: This block contains the fourth line of musical notation, measures 16 and 17. Measure 16 consists of a series of chords: a dotted quarter note chord of G4 and B4, a quarter note chord of G4 and B4, a quarter note chord of G4 and B4, a quarter note chord of G4 and B4, a quarter note chord of G4 and B4, and a quarter note chord of G4 and B4. Measure 17 begins with a quarter note G4, followed by a half note chord of F4 and A4, and ends with a quarter note G4. The lyrics are placed below the staff, with the second part of measure 17 italicized.